

Ringwood Recycling Center

Peters Mine Road in Ringwood

(Open Wednesdays 12pm – 5pm and Saturdays & Sundays from 9am - 5pm)



Accepts the following:

Commingled Recyclables- Aluminum cans, tin cans, steel cans, glass jars, bottles, and plastics



Corrugated Cardboard



Newspaper



Mixed Paper/Junk Mail



Scrap Metal



Electronics (“anything with a plug”)



Tires (\$3.00 per tire to drop off)



Automotive Batteries



Used Motor Oil



Leaves (should be debagged when dumped)



Small Brush no larger than 2” in diameter)



Christmas Trees (the month of January only)



Clothing



Does Not Accept the following:

Household batteries (The Passaic County Office of Solid Waste and Recycling is advising municipalities to dispose of household batteries with solid waste)



Rechargeable Batteries (These must be recycled as hazardous waste)



Florescent Bulbs (These bulbs are hazardous waste and need to be brought to the Passaic County Hazardous Drop off in Wayne or West Milford)



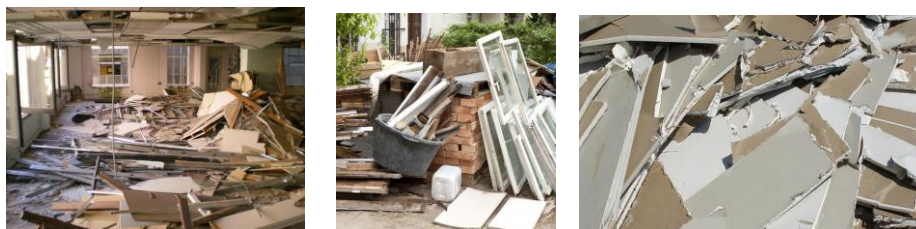
Grass Clippings (Cannot be accepted per NJ Mandate)



Bamboo (Is an invasive species and cannot be accepted)



Construction/Demolition Materials (Must make private arrangements for disposal)



Propane Tanks (Even if they are empty, they must be disposed of as hazardous waste)



Plastic Shopping Bags (These can be taken to some grocery stores)